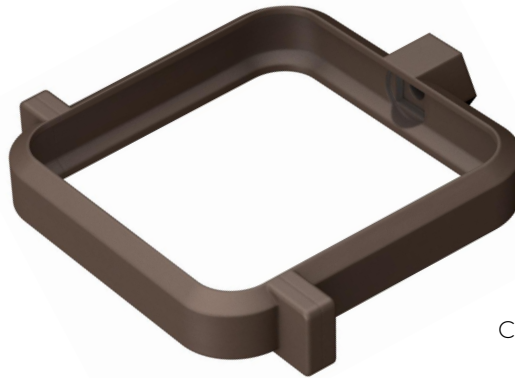


Pipe-clip for pipes and fittings 80x80



CNQ80M

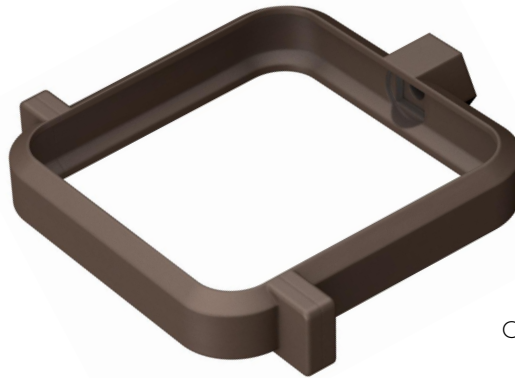
Description	U/M	Item	
		CNQ80N	CNQ80M
Colour	-	grey	brown
Weight	g	24	24
Nominal dimensions	mm	80x80	80x80
Max external Width	mm	107	107
Max external Depth	mm	100	100
Height	mm	19	19
Thickness	mm	2,5	2,5
Screw (self-threading) Length	mm	16	16
Screw (self-threading) Diameter \varnothing	mm	4	4
Metal Nut Diameter	-	M6	M6

Material: PP

Features: The clip is composed by two parts jointed and fixed by self-threading screw AF 4x16.
INSTALLATION: place the first clip below the bell, arrange the others along the down pipes approximately every 140 cm and position the last clip at the bottom no more than 80 cm from the ground.



Pipe-clip for pipes and fittings 100x100



CNQ10M

Description	U/M	Item	
		CNQ10N	CNQ10M
Colour	-	grey	brown
Weight	g	28	28
Nominal dimensions	mm	100x100	100x100
Max external Width	mm	127	127
Max external Depth	mm	120	120
Height	mm	19	19
Thickness	mm	2,5	2,5
Screw (self-threading) Length	mm	16	16
Screw (self-threading) Diameter \varnothing	mm	4	4
Metal Nut Diameter	-	M6	M6

Material: PP

Features: The clip is composed by two parts jointed and fixed by self-threading screw AF 4x16.
INSTALLATION: place the first clip below the bell, arrange the others along the down pipes approximately every 140 cm and position the last clip at the bottom no more than 80 cm from the ground.

