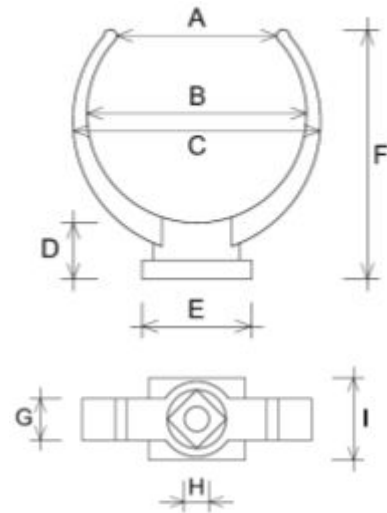


Pipe-clip for pipes \varnothing 50



CNLM50M



Description	U/M	Item			
		CNLM50B	CNLM50N	CNLM50S	CNLM50M
Colour	-	white	grey	sand	brown
Weight	g	13	13	13	13
Nominal Diameter \varnothing	mm	50	50	50	50
Min thickness (center of the body)	mm	3,3	3,3	3,3	3,3
Max thickness (center of the body)	mm	6,0	6,0	6,0	6,0
A - opening width	mm	35	35	35	35
B - internal diameter	mm	47	47	47	47
C - external diameter	mm	56	56	56	56
D - height base	mm	12	12	12	12
E - base width	mm	23	23	23	23
F - total height	mm	54	54	54	54
G - body width	mm	10	10	10	10
H - nut diameter	-	M6	M6	M6	M6
I - base length	mm	20	20	20	20

Material: PVC-U

Features: INSTALLATION: place the first clip below the bell, arrange the others along the down pipes approximately every 140 cm and position the last clip at the bottom no more than 80 cm from the ground.

