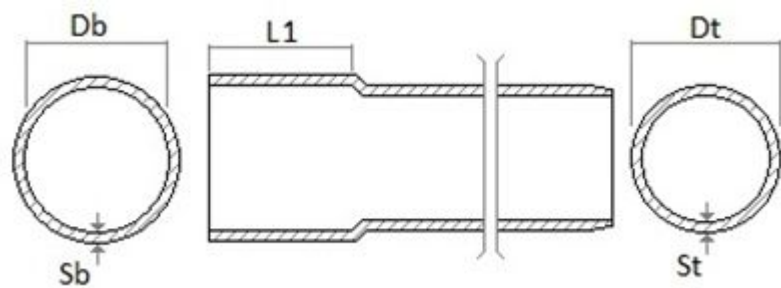


Pipe \varnothing 63 for plumbing and drainage system **BI-BI KOLL**



Item	Colour	Length mm	Db mm	Dt * mm	Sb mm	St mm	L1 mm	Weight g/m
TEB633	dark grey	3000	63,5	63,0	3,0	3,0	50	900

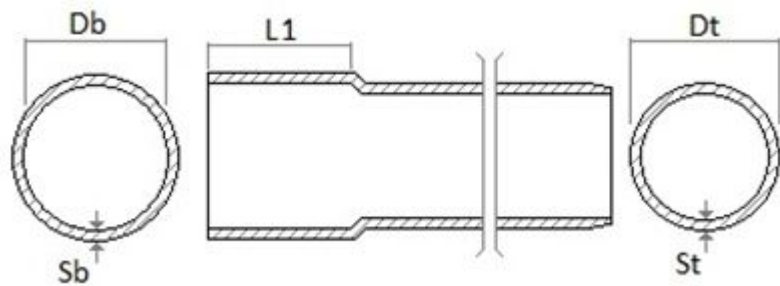
Material: PVC-U

Features: Pipe with bell for sanitary waste system.
Extruded with a high performance production system.
Pipe length includes bell end.

(*) Tolerance 0/+0,2 mm



Pipe \varnothing 80 for plumbing and drainage system **BI-BI KOLL**



Item	Colour	Length mm	Db mm	Dt * mm	Sb mm	St mm	L1 mm	Weight g/m
TEB801	dark grey	1000	80,5	80,0	3,0	3,0	55	1140
TEB802	dark grey	2000	80,5	80,0	3,0	3,0	55	1140
TEB803	dark grey	3000	80,5	80,0	3,0	3,0	55	1140

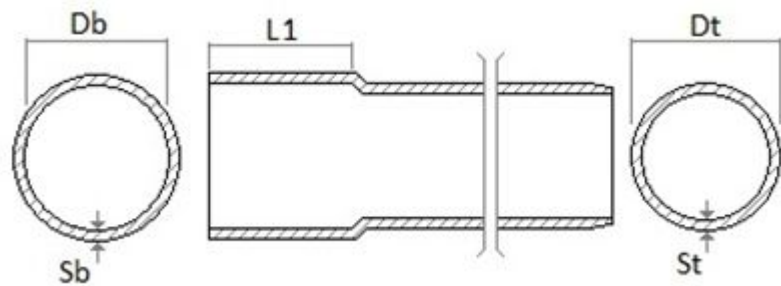
Material: PVC-U

Features: Pipe with bell for sanitary waste system.
Extruded with a high performance production system.
Pipe length includes bell end.

(*) Tolerance 0/+0,2 mm



Pipe \varnothing 100 for plumbing and drainage system **BI-BI KOLL**



Item	Colour	Length mm	Db mm	Dt * mm	Sb mm	St mm	L1 mm	Weight g/m
TEB1005	dark grey	500	100,5	100,0	3,0	3,0	65	1440
TEB1001	dark grey	1000	100,5	100,0	3,0	3,0	65	1440
TEB1002	dark grey	2000	100,5	100,0	3,0	3,0	65	1440
TEB1003	dark grey	3000	100,5	100,0	3,0	3,0	65	1440

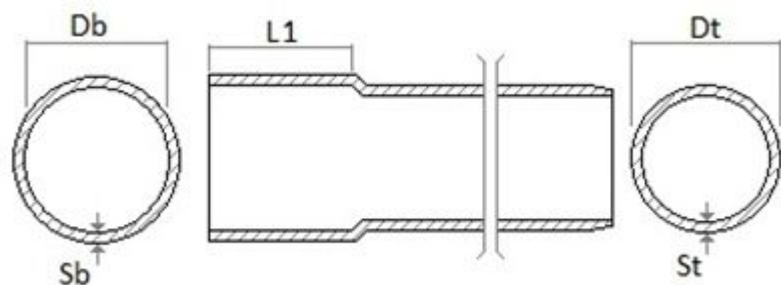
Material: PVC-U

Features: Pipe with bell for sanitary waste system.
Extruded with a high performance production system.
Pipe length includes bell end.

(*) Tolerance 0/+0,2 mm



Pipe \varnothing 110 for plumbing and drainage system **BI-BI KOLL**



Item	Colour	Length mm	Db mm	Dt * mm	Sb mm	St mm	L1 mm	Weight g/m
TEB1103	dark grey	3000	110,5	110,0	3,2	3,2	65	1700

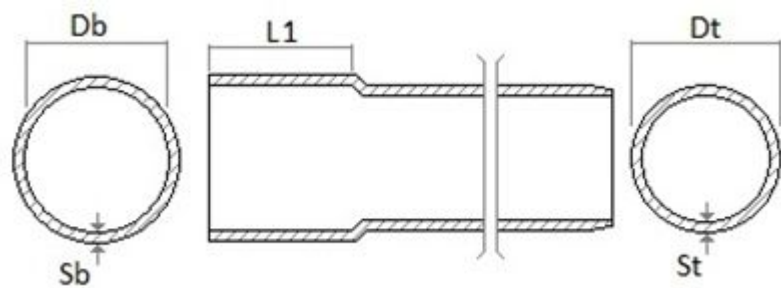
Material: PVC-U

Features: Pipe with bell for sanitary waste system.
Extruded with a high performance production system.
Pipe length includes bell end.

(*) Tolerance 0/+0,3 mm



Pipe \varnothing 125 for plumbing and drainage system **BI-BI KOLL**



Item	Colour	Length mm	Db mm	Dt * mm	Sb mm	St mm	L1 mm	Weight g/m
TEB1253	dark grey	3000	125,5	125,0	3,2	3,2	75	1950

Material: PVC-U

Features: Pipe with bell for sanitary waste system.
Extruded with a high performance production system.
Pipe length includes bell end.

(*) Tolerance 0/+0,3 mm

