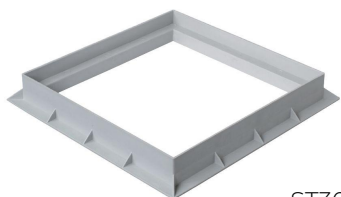
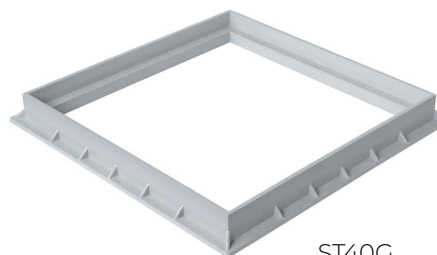


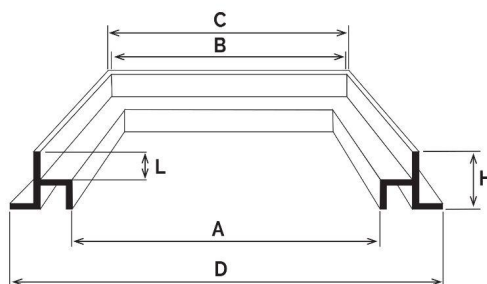
Telai



ST30G



ST40G



Codice	A mm	B mm	C mm	D mm	L mm	H mm	Peso g
ST16G	143	157	165	187	12	25	170
ST20G	162	189	197	218	20	40	290
ST25G	204	236	243	265	21	40	370
ST30G	253	287	293	326	22	42	474
ST40G	353	387	397	427	25	44	1105
ST45	402	434	447	478	25	45	1315
ST55	502	536	546	587	35	54	1575

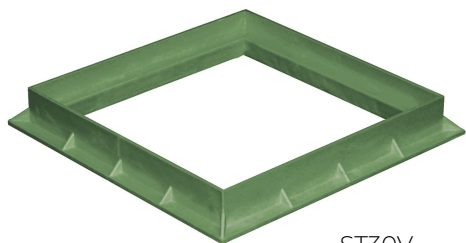
Materiale: PVC-U

Colore: Grigio chiaro

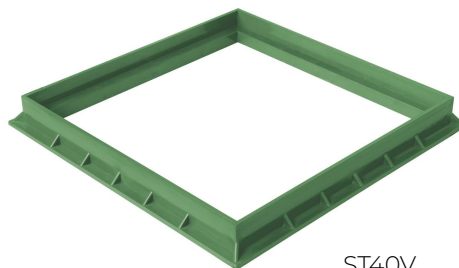
Caratteristiche: I telai vengono realizzati in PVC anti-shock che conferisce al prodotto elasticità e resistenza all'urto, al gelo e agli agenti chimici ed atmosferici.



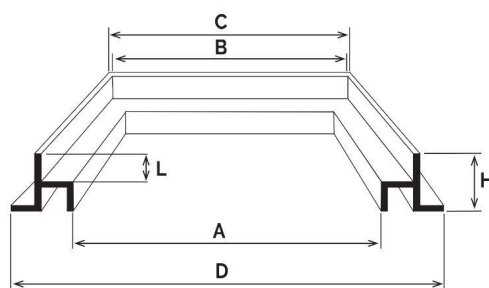
Telai



ST30V



ST40V



Codice	A mm	B mm	C mm	D mm	L mm	H mm	Peso g
ST20V	162	189	197	218	20	40	290
ST25V	204	236	243	265	21	40	370
ST30V	253	287	293	326	22	42	474
ST40V	353	387	397	427	25	44	1105
ST55V	502	536	546	587	35	54	1575

Materiale: PVC-U

Colore: Verde

Caratteristiche: I telai vengono realizzati in PVC anti-shock che conferisce al prodotto elasticità e resistenza all'urto, al gelo e agli agenti chimici ed atmosferici.

