

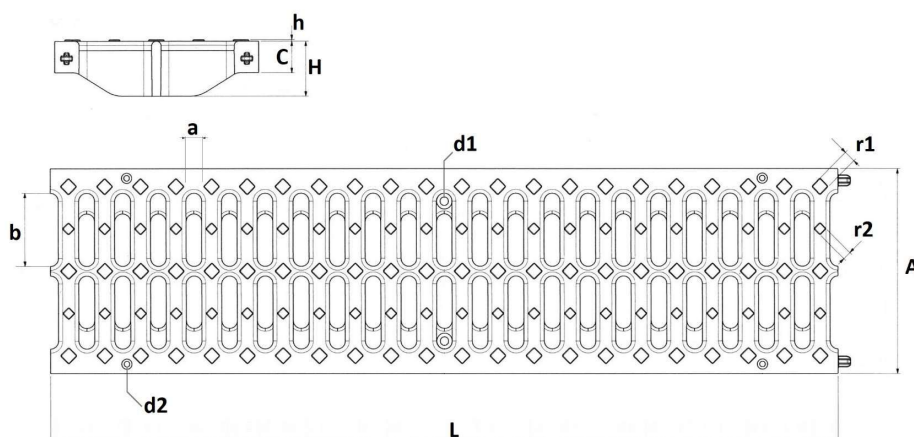
Grate for drainage channel 130 **PRATIKO**



SGRC130G



SGRC130N



Item	A mm	L mm	C mm	H mm	a mm	b mm	r1 mm	r2 mm	h mm	d1 mm	d2 mm	Weight g
SGRC130G	129	500	20,5	36	10	32	7,5	5,5	1	5,5	3,6	1650
SGRC130N	129	500	20,5	36	10	32	7,5	5,5	1	5,5	3,6	1650

Material: PVC-U SGRC130G
B-TEK "biotechnological material" SGRC130N

Colour: SGRC130G Grey - SGRC130N Black

Features: The drive-over grate complies with UNI EN 1433 standard.

- Breaking load > 150 kN
- Load class C250
- Theoretical flow rate 1,6 l/s
- Section 132 cm² of water drainage (44 slots of 3 cm²)

