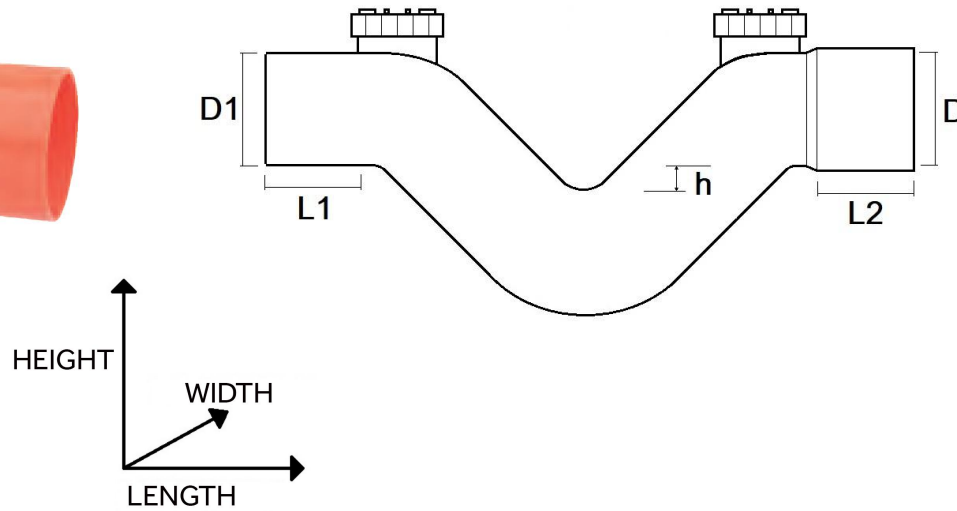


Siphon Firenze with double access trap



SFS2T100



Item	D1 (M) mm	D2 (F) mm	L1 (M) mm	L2 (F) mm	h mm	LENGTH mm	WIDTH mm	HEIGHT mm	WEIGHT g
SFS2T080	80,0	80,5	45	51	13	374	87	230	600
SFS2T082	82,0	82,5	48	56	17	418	89	230	800
SFS2T100	100,0	100,5	76	53	15	488	107	265	1000
SFS2T125	125,0	125,6	63	69	32	538	132	300	1400
SFS2T140	140,0	140,6	74	75	16	582	147	372	1900
SFS2T160	160,0	160,6	70	83	16	654	167	395	2600
SFS2T200	200,0	200,7	108	101	10	776	207	495	4200

Material: PVC-U

Colour: Orange RAL 2008

Features: Siphon obtained by heat-welding two 45° and one 87° bends and application of threaded caps for inspection and closure with O'RING in black EPDM

