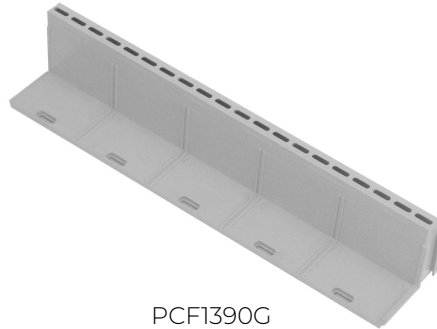


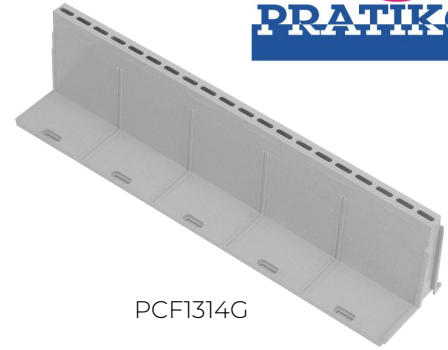
## Slotted grate 130 for drainage channel 130 **PRATIKO**



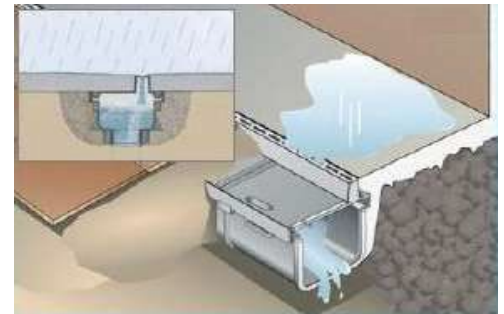
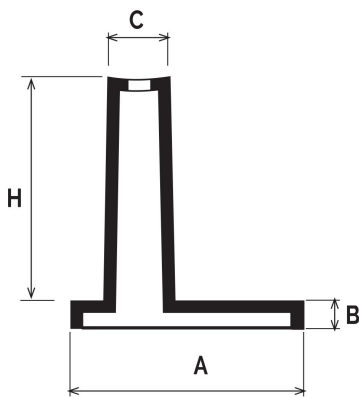
PCF1320G



PCF1390G



PCF1314G



Item	A mm	B mm	C mm	H mm	L mm	Breaking load kN*	Weight g
<b>PCF1320G</b>	130	20	20	20	500	15	410
<b>PCF1390G</b>	130	20	20	90	500	62	750
<b>PCF1314G</b>	130	20	20	140	500	74	950

**Material:** PVC-U

**Colour:** Light grey

**Features:** The grate has the CE marking in compliance with UNI EN 1433 standard.  
 - Area of water drainage (All models): 22,4 cm<sup>2</sup> (20 slits of length 20 mm).  
 - Drainage rate (All models): 1,6 lt/s per linear meter of clean drain (theoretical value calculated with shutter hypothesis 20 mm).

(\*) NOTE: the breaking load of the drains depends on the lining that is placed over them. The values indicated above were obtained with complete concrete lining.

