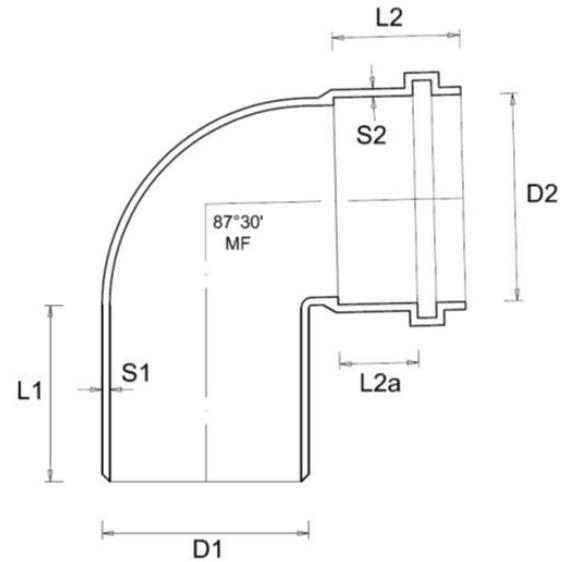
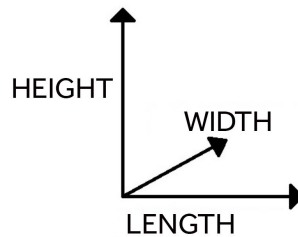


Sewerage series - Bend 87° 30' -



CSOG87160



REFERENCE REGULATIONS: EN 1401-1:2C

| Item | D1 (M) | D2 (F) | L1 (M) | L2 (F) | L2 (A) | S1(M) | S2(F) | LENGT H mm | WIDTH mm | HEIG HT mm | WEIG HT g |
|------------------|--------|--------|--------|--------|--------|-------|-------|------------------|-------------|------------------|-----------------|
| | mm | mm | mm | mm | mm | mm | mm | mm | mm | mm | g |
| CSOG87160 | 160,0 | 160,8 | 88 | 73 | 47 | 4,2 | 3,6 | 258 | 181 | 267 | 975 |
| CSOG87200 | 200,0 | 201,0 | 105 | 87 | 56 | 5,0 | 4,4 | 318 | 220 | 327 | 1720 |
| CSOG87250 | 250,0 | 250,8 | 127 | 122 | 74 | 5,4 | 5,6 | 395 | 280 | 420 | 3400 |
| CSOG87315 | 315,0 | 316,0 | 132 | 118 | 67 | 7,8 | 6,9 | 460 | 350 | 480 | 5960 |

Material: PVC-U

Colour: Grey RAL 7037

Features: The 87° 30' bends including O'RING gasket are used for:
 - Discharges of civil and industrial waste water (white, black and mixed water).
 - Industrial, agricultural and waste water discharges in general within the limit of the chemical resistance of the materials.

