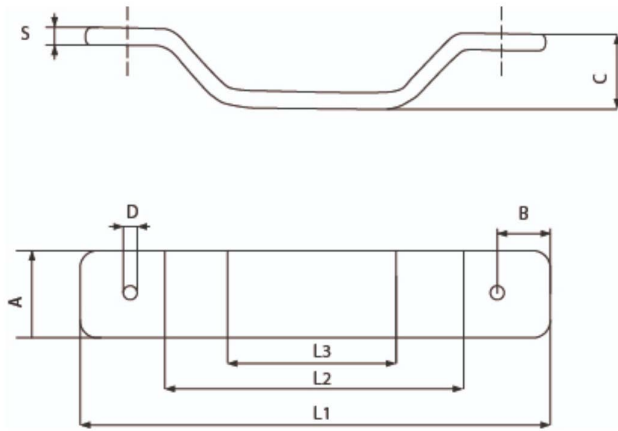


Grate fixing system for drainage channel 130 **PRATIKO**



Item	A mm	B mm	C mm	D mm	L1 mm	L2 mm	L3 mm	S mm	Weight g
BGP130	20	9	17,5	4,2 (M5)	110	72	42	3	56

Material: Galvanized iron

Colour: Metal

Features: The BGP130 fits into the special slots on the internal sides of the channels. The threaded holes allow the grates to be fixed to the BGP130 using threaded screws metric M5. The fixings are compatible with the PRATIKO CSA130, CPA130 and CPB130 channels.

