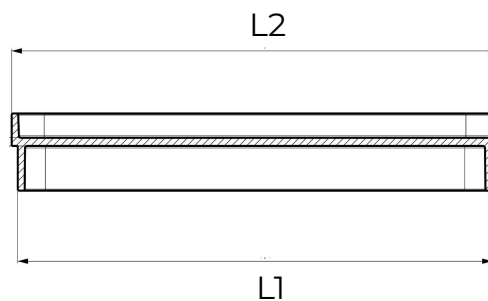
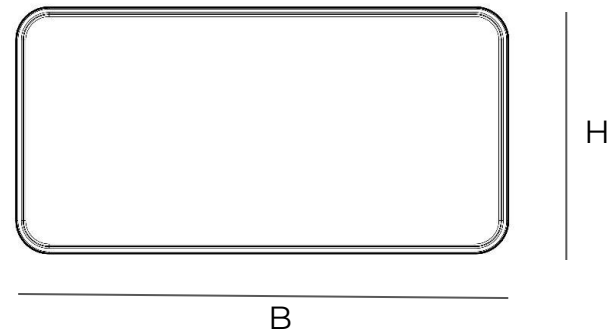


White duct system



Item	Colour	BxH mm	S mm	L1 mm	L2 mm
CTAP126B	white	120x60	19	117	120
CTAP157B	white	150x70	24	147	150
CTAP229B	white	220x90	43	216	220

Description: End cap for ducts and accessories

Material: ABS

Features: The closing cap is used to interrupt the air flow and is suitable for both "narrow side L1" ducted pipes and for "wide side L2" accessories. It is part of the ducted ventilation system which allows rapid evacuation of vapors (max 80°C) and unpleasant odors from environments such as the kitchen or bathrooms and a healthy exchange of air.

