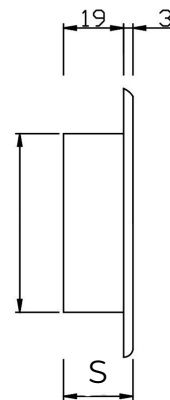
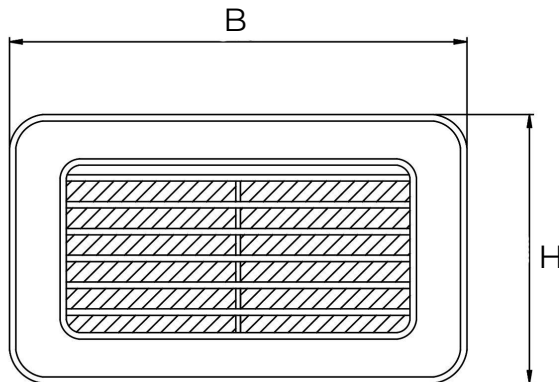
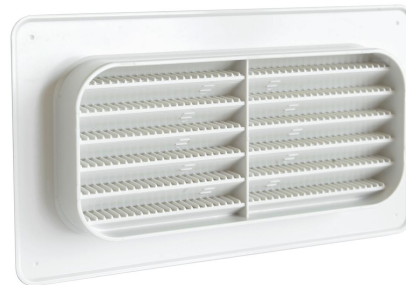


Grilles for duct system



Item	Colour	BxH mm	Hole mm	Pass Air cm ²	Insect screen	S mm
C126B	white	145x85	118x58	35	-	22
C157B	white	180x100	148x68	55	-	22
C229B	white	256x126	216x86	110	-	22
C126RB	white	145x85	118x58	30	✓	22
C157RB	white	180x100	148x68	50	✓	22
C229RB	white	256x126	216x86	107	✓	22

Description: Recessed mounting “C” type grille for rectangular pipes in duct system

Material: ABS plastic

Features: The “C” type grille must be installed as an external terminal accessory on the wall. It is part of the ducted ventilation system which allows rapid evacuation of vapors (max 80°C) and unpleasant odors from environments such as the kitchen or bathrooms and a healthy exchange of air.

