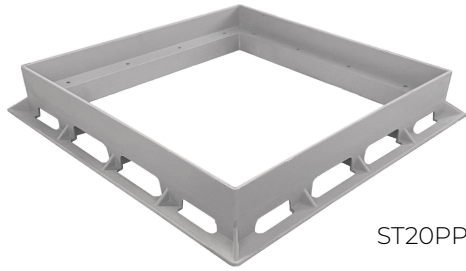
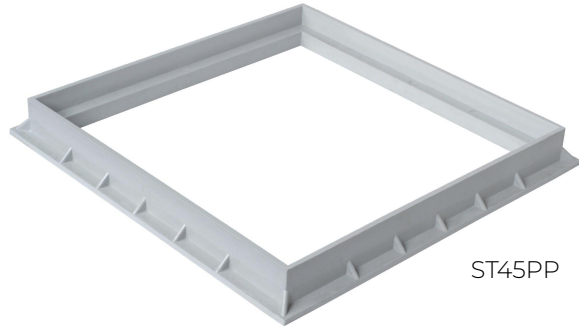


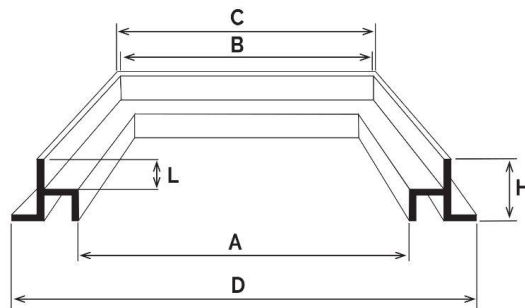
Telai in polipropilene



ST20PP



ST45PP



Codice	A mm	B mm	C mm	D mm	L mm	H mm
ST20PP	162	188	194	216	20	38
ST30PP	251	284	291	323	21	42
ST40PP	350	384	394	423	24	43
ST45PP	399	430	444	474	24	44
ST55PP	499	532	542	583	34	53

Materiale: Polipropilene rinforzato

Colore: Grigio chiaro

Caratteristiche: I telai vengono realizzati in "Polipropilene" che conferiscono al prodotto resistenza all'urto, al gelo, agli agenti atmosferici chimici ed atmosferici.

